

# ASC Pumping Equipment

## Condensate Return System and Boiler Feed System



Typical Boiler Feed System



Typical Condensate with  
Optional Control Panel

**Custom Systems  
Available**



Custom Quadplex Lowboy

**ASC**  
  
Pumping Equipment

Visit us at  
[www.ascpump.com](http://www.ascpump.com)

Toll Free: 800-472-1012  
Local: 262-677-0995  
Fax: 262-677-1899  
E-mail: [ricks@ascpump.com](mailto:ricks@ascpump.com)

## Condensate Return Systems

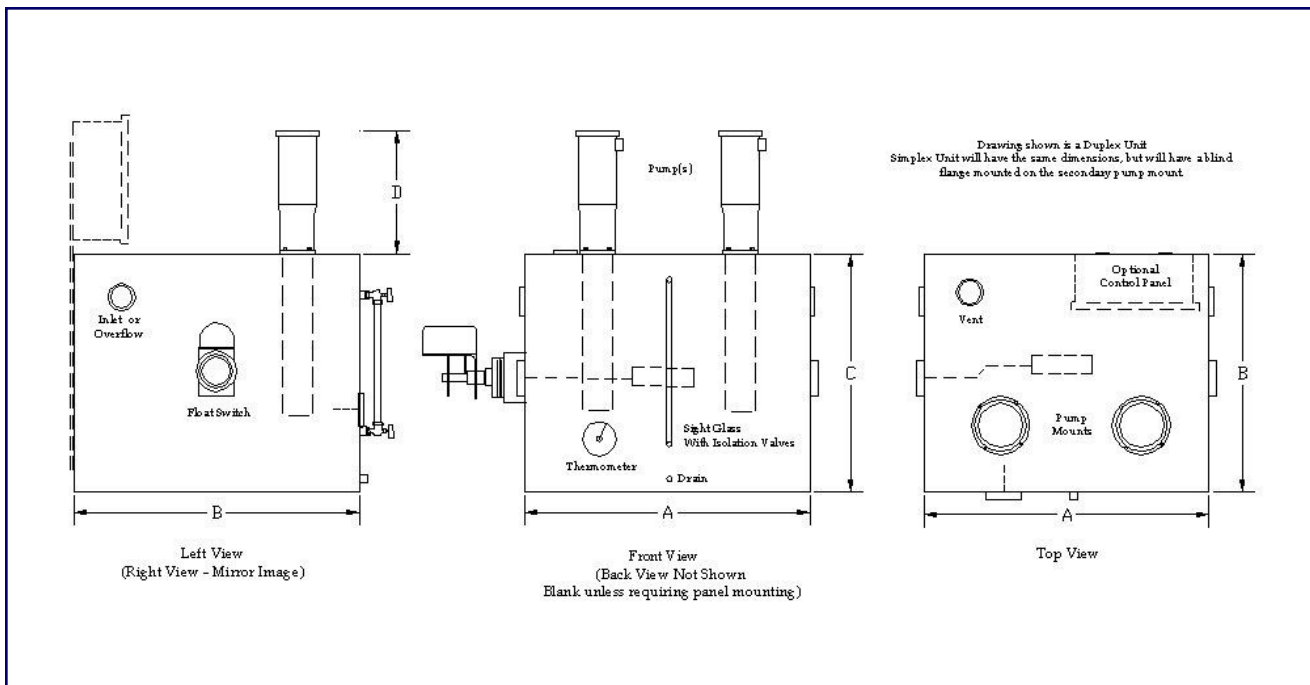
Standard system includes: Carbon Steel, Receiver Tank, Pump(s), Float Switch/Mechanical Alternator

- Simplex and Duplex Units
- 10 to 35 Gallon Standard Receiver Tank Sizes
- Capacity of 10-40 psi
- Optional Control Panel available for Single or Three phase operation or alarm needs



Dimensional Table

Tank Size – Gallons	A	B	C	D
10 – T	16.00	15.50	13.00	Varies with HP
15 – T	18.50	18.00	13.00	Varies with HP
25 – T	23.00	22.50	15.00	Varies with HP
35 – T	24.00	23.50	19.00	Varies with HP



## Pumping Options



Vertical Immersion Pump

Our standard system is supplied with Vertical Immersion Pumps, which do not require an isolation valve. These pumps are Cast Iron – Stainless Steel Construction with a wide range of pump sizes and multiple stages. Pumps operate at numerous duty points and pressures. They are built with a standard pump mounting plate for ease of removal and installation. These pumps can also be supplied with a multitude of options, including but not limited to:

- All Stainless Construction
- Optional Bearing Materials
- Extensions for added pump length
- Explosion Proof Motors
- Wash Down Duty
- Special Voltages

Numerous optional pump types are available if you have special conditions and customer specific requirements. Our standard system includes Vertical Immersion pumps, eliminating the need to drain the system for maintenance and require a smaller footprint. Vertical side mounted end suction pumps as shown below can be optionally provided.

## Condensate System Options

- Stainless Steel Receiver Tank
- Galvanized Receiver Tank
- Cast Iron Receiver Tank
- Side Mounted Pump
- High Temperature Seals
- Tank Mounted Thermometer
- Gauge Glass Assembly with Shutoff Valves
- Inlet Y-Strainer
- Special Voltages
- Electrical Alternator
- SS Probe Control Assembly
- Stand Alone Alarm Panel
- Complete Control Panel



Vertical Single Stage End Suction Pump

## Boiler Feed Systems

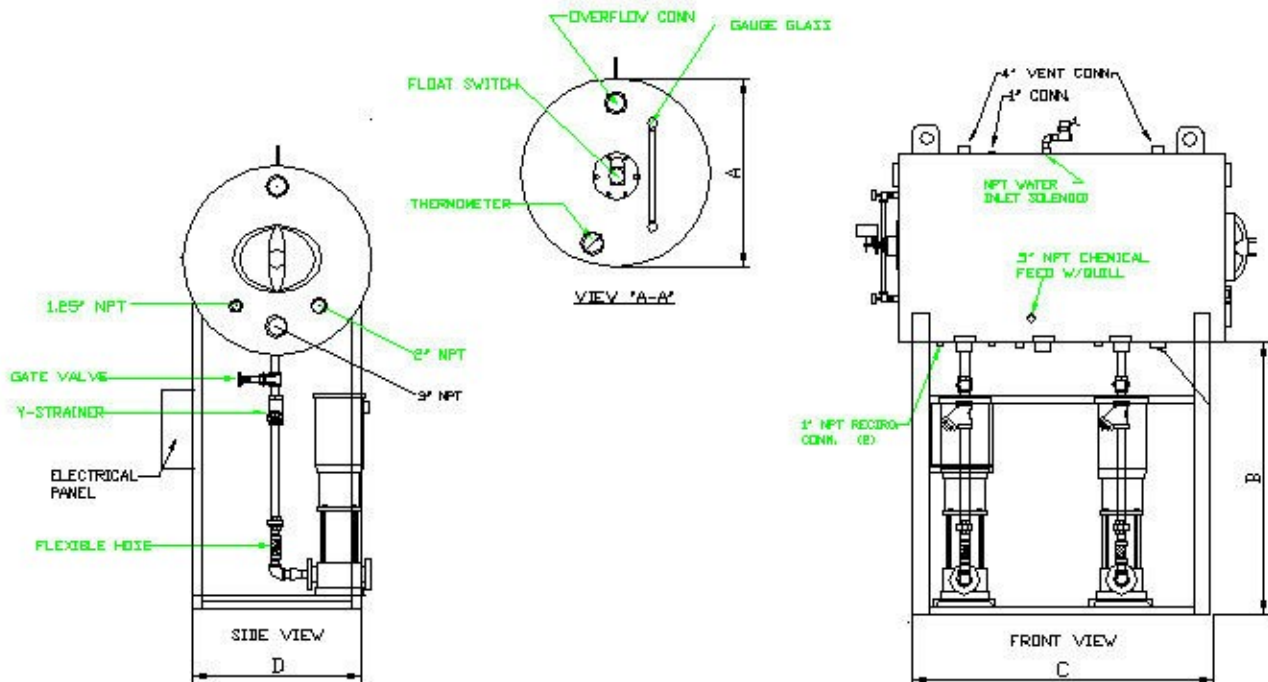
Standard system includes: Carbon Steel Receiver Tank, Stand, Base Mounted Pump(s), Makeup Water Assembly, Suction Piping and UL Listed Nema 1 Three Phase Control Panel.

- Simplex, Duplex, Dual and Triplex Standard Units
- 30 to 850 Gallon Receiver Tanks (Larger Available)
- Capacity of 10-190 psi
- Numerous System and Tank Options



Dimensional Table

Tank Size—Gallons	A	B	C	D
60	22.5	34.5	36.5	22
90	24.5	42	48.5	22.75
180	30.5	54.5	60	28
260	36.5	50.75	60	30
350	42.5	48.5	60	38.5
500	42.5	48.5	66	38.5
650	48.5	51.5	66	47
850	48.5	51.5	93	47



## Pumping Options



Standard system is supplied with Vertical Multistage Pumps. These pumps are Cast Iron–Stainless Steel Construction with a wide range of pump sizes and multiple stages. Pumps operate at numerous duty points and pressures. These pumps can also be supplied with a multitude of options, including but not limited to:

- Low NPSH
- High Pressure
- Extreme Temperatures
- All Stainless Construction
- Air Cooled Seal for extremely high temperatures
- Dry Run Sensor
- Motor Cool Top
- Chemical Resistant O-Rings
- Explosion Proof
- Special Voltages

Built in recirculation tapping for ease of installing a by-pass or recirculation system for a continuous feed operation.

Numerous optional pump types are available if you have special conditions and customer specific requirements. Horizontal single stage end suction pumps as shown below can be optionally provided.

## Boiler Feed System Options

- Stainless Steel Receiver Tank
- Galvanized Receiver Tank
- ASME Code Receiver Tank
- Tank Manway
- Stainless Steel Stand and Pump Bases
- Stainless Steel Suction Piping
- Externally Piped Makeup Valve
- Externally Piped Float/ Alarm Assemblies
- SS Probe Control Assembly/ Alarms
- Gauge Glass Assembly with Shutoff Valves
- Tank Mounted Thermometer
- Recirculation Piping
- Three Valve Bypass Piping
- Pump Pressure Gauges
- High and Low Pressure Preheat Systems
- Special Voltages
- Nema 4 and Nema 12 Control Panels
- Numerous Interior Control Panel Accessories



Single Stage End

## Facility Capabilities

- 25,000 Square Foot Manufacturing and Distribution Facilities in Wisconsin and Kansas
- NSF 50 Certified Test Lab
- Complete Machine Shop and Repair Facility
- Powder Coating and Paint Booth Capabilities
- Fabrication and Welding Shop

## Company History

Established in 1984, ASC Pumping Equipment has served the needs of industrial, commercial, municipal and OEM customer nationwide. With 25+ years of HVAC system packages and accessories, we are fully equipped to serve your many pumping needs.

## Contact Information

For Sales and Service Contact:

Wisconsin – Richfield  
Phone: 262-677-0995  
Toll Free: 800-472-1012  
Fax: 262-677-1899  
ricks@ascpump.com

Wisconsin – Appleton  
Phone: 920-757-6484  
Fax: 920-757-6697  
sarahg@ascpump.com

Kansas – Olathe  
Phone: 913-747-0390  
Toll Free: 800-838-5585  
Fax: 913-747-0397  
craigs@ascpump.com



Visit us at  
[www.ascpump.com](http://www.ascpump.com)

Toll Free: 800-472-1012  
Local: 262-677-0995  
Fax: 262-677-1899  
E-mail: ricks@ascpump.com